

# CITY OF HAMBURG, MINNESOTA

## CONSTRUCTION PLANS FOR

REMOVALS, FULL DEPTH RECLAMATION, BITUMINOUS PAVEMENT, CONCRETE CURB AND GUTTER

## 2020 STREET IMPROVEMENT PROJECT

EXISTING	
	RIGHT OF WAY
	PERMANENT EASEMENT
	PROPERTY LINE
	HORIZONTAL CONTROL POINT
	BENCHMARK
	SURVEY MARKER
	SOIL BORING
	SANITARY SEWER AND MANHOLE
	FORCE MAIN AND LIFT STATION
	SANITARY SEWER SERVICE & CLEANOUT
	WATER MAIN, HYDRANT, VALVE AND MANHOLE
	WATER SERVICE AND CURB STOP BOX
	STORM SEWER, MANHOLE AND CATCH BASIN
	CULVERT AND APRON ENDWALL
	GAS MAIN, VALVE, VENT AND METER
	HANDHOLE
	BURIED FIBER OPTIC CABLE AND MANHOLE
	BURIED PHONE CABLE, PEDESTAL AND MANHOLE
	BURIED TV CABLE, PEDESTAL AND MANHOLE
	BURIED ELECTRIC CABLE, PEDESTAL, MANHOLE, TRANSFORMER AND METER
	OVERHEAD WIRE, POLE AND GUY WIRE
	LIGHT POLE
	TRAFFIC SIGNAL
	STREET NAME SIGN
	SIGN (NON STREET NAME)
	RAILROAD TRACKS
	DECIDUOUS AND CONIFEROUS TREE
	BUSH / SHRUB AND STUMP
	EDGE OF WOODED AREA
	WETLAND
	BUILDING
	FENCE (UNIDENTIFIED)
	BARBED WIRE FENCE
	CHAIN LINK FENCE
	ELECTRIC WIRE FENCE
	WOOD FENCE
	WOVEN WIRE FENCE
	PLATE BEAM GUARDRAIL
	CABLE GUARDRAIL
	POST / BOLLARD
	RETAINING WALL
PROPOSED	
	STREET CENTERLINE
	RIGHT-OF-WAY
	PERMANENT EASEMENT
	TEMPORARY EASEMENT
	CONSTRUCTION LIMITS
	SANITARY SEWER, BULKHEAD AND MANHOLE
	FORCE MAIN
	SANITARY SERVICE AND CLEANOUT
	WATER MAIN, TEE, HYDRANT, BULKHEAD AND VALVE
	WATER VALVE MANHOLE, REDUCER, BEND AND CROSS
	WATER SERVICE AND CURB STOP BOX
	STORM SEWER, MANHOLE AND CATCH BASIN
	CULVERT AND APRON ENDWALL
	DRAIN TILE
	DITCH / SWALE
	RIPRAP
	STREET NAME SIGN
	SIGN (NON STREET NAME)
	RETAINING WALL

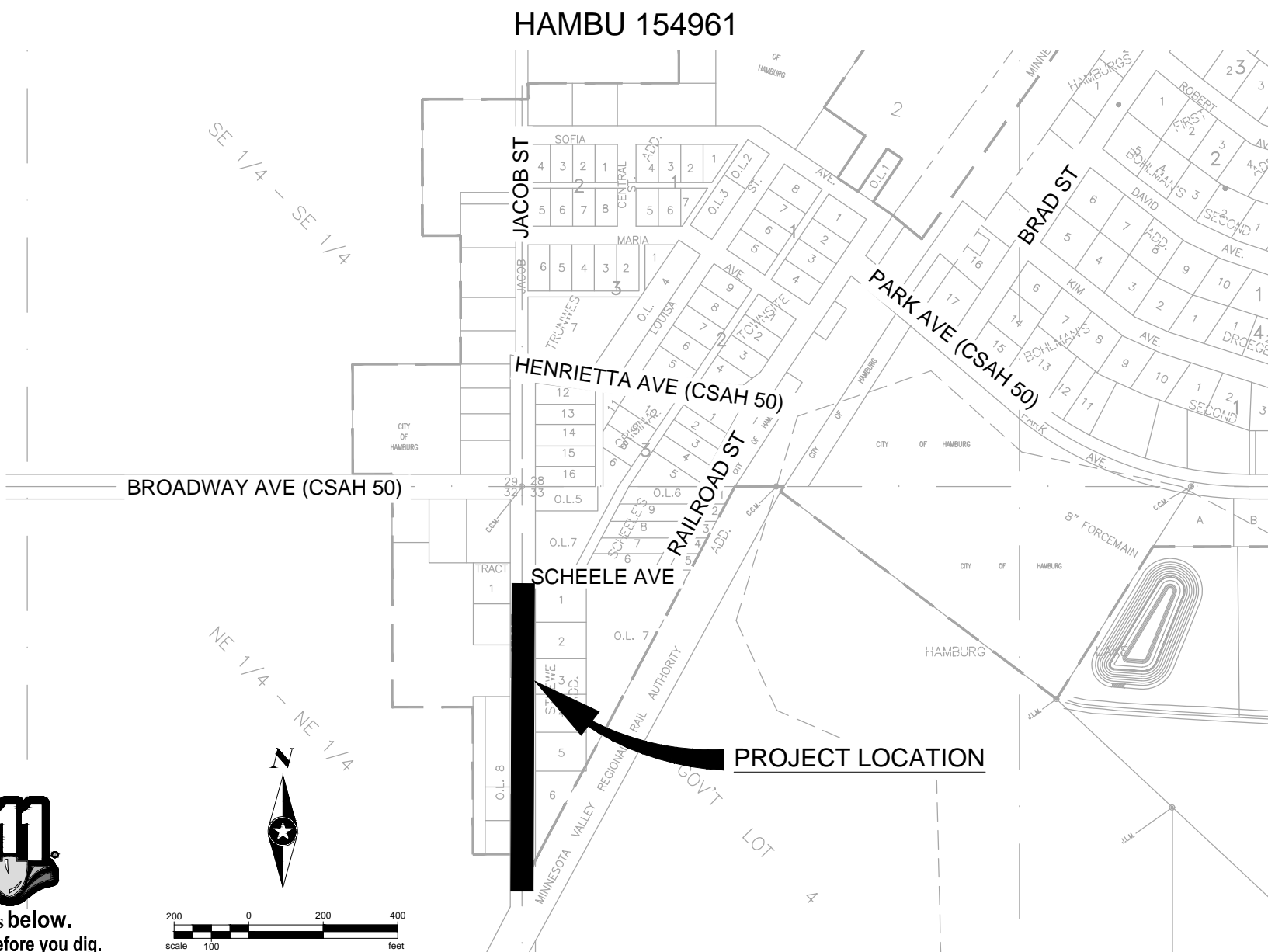
GOVERNING SPECIFICATIONS  
THE 2018 EDITION OF THE MINNESOTA DEPARTMENT OF TRANSPORTATION "STANDARD SPECIFICATIONS FOR CONSTRUCTION" SHALL GOVERN EXCEPT AS MODIFIED BY THE SPECIFICATIONS FOR THIS PROJECT.

ALL TRAFFIC CONTROL DEVICES SHALL CONFORM TO THE LATEST EDITION OF THE MINNESOTA MANUAL ON UNIFORM TRAFFIC CONTROL DEVICES, INCLUDING THE LATEST FIELD MANUAL FOR TEMPORARY TRAFFIC CONTROL ZONE LAYOUTS.

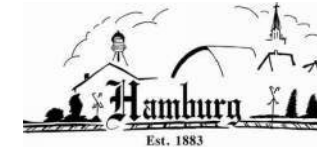
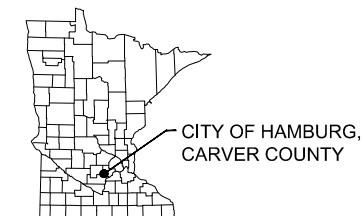
### INDEX

SHEET NO.	DESCRIPTION
1	TITLE SHEET
2	STATEMENT OF ESTIMATED QUANTITIES, DETAILS, & TYPICAL SECTION
3	NOTES
4-5	PLAN SHEETS

THIS PLAN CONTAINS 5 SHEETS.



### PROJECT LOCATION



HAMBURG, MINNESOTA

**SEH**  
PHONE: 800.838.8666  
1390 HWY. 15 S.  
SUITE 200, PO BOX 308  
HUTCHINSON, MN 55350  
www.sehinc.com

I HEREBY CERTIFY THAT THIS PLAN WAS PREPARED BY ME OR UNDER MY DIRECT SUPERVISION AND THAT I AM A DULY LICENSED PROFESSIONAL ENGINEER UNDER THE LAWS OF THE STATE OF MINNESOTA.

Signature: Justin Black, PE  
Date: 04/14/2020 Lic. No. 43373

FILE NO.  
154961

1  
5

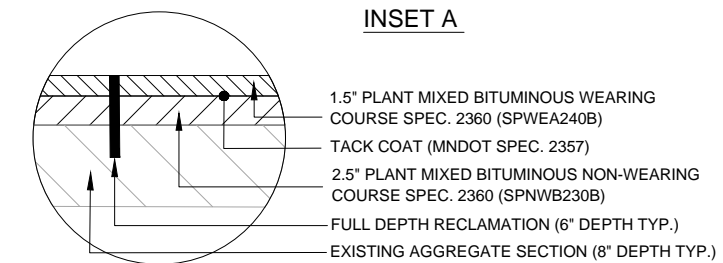
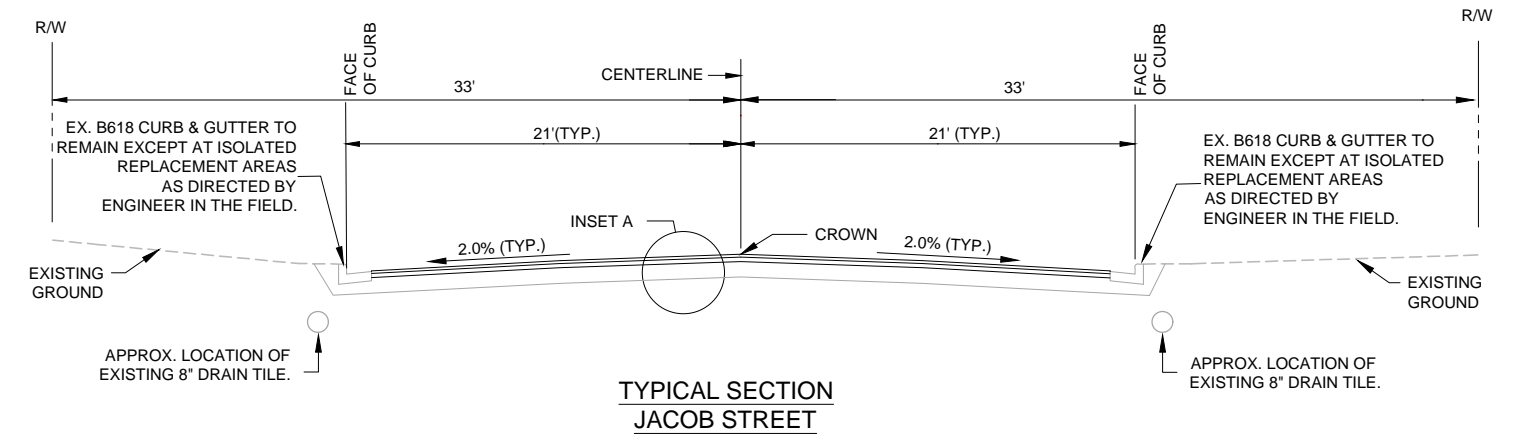
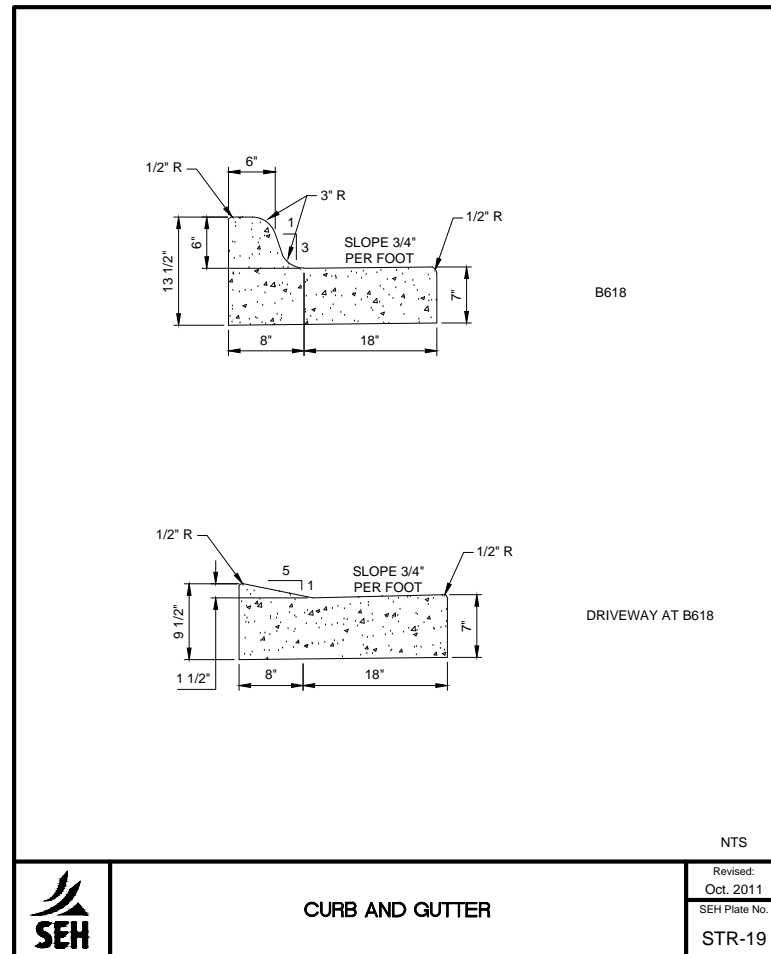
NOTE:  
THE SUBSURFACE UTILITY QUALITY INFORMATION IN THIS PLAN IS LEVEL D. THIS UTILITY QUALITY LEVEL WAS DETERMINED ACCORDING TO THE GUIDELINES OF C/ASCE 38-02 ENTITLED "STANDARD GUIDELINES FOR THE COLLECTION AND DEPICTION OF EXISTING SUBSURFACE UTILITY DATA."

THE CONTRACTOR SHALL CALL THE GOPHER STATE ONE CALL SYSTEM AT 811 BEFORE COMMENCING EXCAVATION.



Save: 4/15/2020 3:21 PM bbratsch Plot: 4/21/2020 8:39 AM X:\FH\HAMBURG\154961\5-final-dsgn\5-drawings\10-Civil\caedwg\sheet\HA154961.dwg

STATEMENT OF ESTIMATED QUANTITIES					
Item No.	Item Description	Unit	Est. Qty.	Qty. To Date	Comments
<b>STREET, CURB AND GUTTER, DRAINAGE PIPE, SIDEWALKS</b>					
2021.501	MOBILIZATION	LUMP SUM	1		
2104.503	REMOVE CONCRETE CURB AND GUTTER	LIN FT	80		
2104.503	SAWING BITUMINOUS PAVEMENT	LIN FT	39		
2123.610	STREET SWEEPER (WITH BROOM PICKUP)	HOUR	10		
2215.504	FULL DEPTH RECLAMATION	SQ YD	3,900		
2331.603	JOINT ADHESIVE (MASTIC)	LIN FT	1,839		
2357.506	BITUMINOUS MATERIAL FOR TACK COAT	GAL	200		
2360.509	TYPE SP 9.5 WEARING COURSE MIX (2,B) (SPWEA240B)	TON	380		
2360.509	TYPE SP 12.5 NON-WEARING COURSE MIX (2,B) (SPNWB230B)	TON	640		
2531.503	HAND FORMED CONCRETE CURB & GUTTER	LIN FT	80		
2575.604	TURF RESTORATION	SQ YD	50		
2575.607	SELECT TOPSOIL BORROW (LV)	CU YD	5		
2563.601	TRAFFIC CONTROL	LUMP SUM	1		
2582.503	4" BROKEN LINE PAINT, YELLOW	LIN FT	900		CENTER OF JACOB ST, ROAD LENGTH
<b>STORM SEWER</b>					
2405.502	ADJUST FRAME, RING, AND CASTING (STORM)	EACH	1		
2573.502	STORM DRAIN INLET PROTECTION	EACH	3		
<b>SANITARY SEWER</b>					
2405.502	ADJUST FRAME, RING, AND CASTING (SANITARY)	EACH	2		
2506.602	EXTERNAL MANHOLE SEAL (SANITARY)	EACH	2		



Save: 4/21/2020 9:59 AM bbraisch Plot: 5/11/2020 2:01 PM X:\V\H\HAMBURG\1549615-final-dsgn\51-drawings\10-Civil\cad\dwg\sheet\HA154961-SEC-NOTES-DETAIL.TS.dwg

DRAWN BY:	BLB				
DESIGNER:	BLB				
CHECKED BY:	JLB				
DESIGN TEAM	NO.	BY	DATE	REVISIONS	



I HEREBY CERTIFY THAT THIS PLAN WAS PREPARED BY ME OR UNDER MY DIRECT SUPERVISION AND THAT I AM A DULY LICENSED PROFESSIONAL ENGINEER UNDER THE LAWS OF THE STATE OF MINNESOTA.

*Justin Black*  
Date: 04/14/2020

JUSTIN BLACK, PE  
Lic. No. 43373

2020 STREET  
IMPROVEMENT PROJECT  
HAMBURG, MINNESOTA

**SEQ  
DETAILS  
TYPICAL SECTION**

FILE NO.  
154961

2  
5

## GENERAL NOTES

CONTRACTOR SHALL PROVIDE TRAFFIC CONTROL.

PROTECT ALL FACILITIES NOT SPECIFIED FOR REMOVAL.

INSTALL STORM DRAIN INLET PROTECTION AT ALL STORM STRUCTURES PER SWPPP OR AS DIRECTED BY ENGINEER PRIOR TO START OF WORK.

ALL EXCESS AGGREGATE BASE MATERIAL (EXCESS RECLAMATION MATERIAL CONSISTING OF AGGREGATE BASE AND BITUMINOUS BLEND) TO BECOME PROPERTY OF CONTRACTOR AND DISPOSED OF OFF SITE OR USED, AT THE CONTRACTORS DISCRETION, FOR AGGREGATE MATERIAL PER MNDOT SECTION 3138 ON OTHER AREAS OF THE PROJECT.

ALL CONCRETE, EARTHWORK, BITUMINOUS AND STRUCTURES REMOVED BY CONSTRUCTION SHALL BECOME THE PROPERTY OF THE CONTRACTOR AND SHALL BE DISPOSED OF OUTSIDE OF THE PROJECT LIMITS, IN ACCORDANCE WITH THE PROVISIONS OF SPEC 2104 AND 2105, UNLESS OTHERWISE NOTED.

SAWCUT BITUMINOUS AND CONCRETE AS DIRECTED BY THE ENGINEER IN THE FIELD.

DURING THE CONSTRUCTION OPERATIONS, IF ANY MATERIAL IS DEPOSITED IN THE FLOW LINE OF ANY GUTTERS OR DRAINAGE STRUCTURE, SUCH THAT THE FLOW OF WATER IS OBSTRUCTED, IT SHALL BE REMOVED AT THE CLOSE OF EVERY WORKING DAY. AT THE CONCLUSION OF OPERATIONS, ALL DRAINAGE FACILITIES SHALL BE CLEAN AND FREE OF ANY OBSTRUCTIONS. THE COST OF THIS WORK SHALL BE INCIDENTAL.

QUALITY CONTROL INCLUDING COMPACTION TESTING SHALL BE IN ACCORDANCE WITH THE PROJECT MANUAL. ALL COMPACTION SHALL MEET THE RECOMMENDATIONS CONTAINED IN THE MATERIAL TESTING SOILS REPORTS.

DRILL AND GROUT REINFORCEMENT BARS WHEN CONNECTING INTO EXISTING CURB AND GUTTER NEAR CATCH BASINS, CURB RAMPS, AND OTHER LOCATIONS AS DIRECTED BY ENGINEER (INCIDENTAL).

BROKEN LINE PAINT CENTER STRIPE IS TO BE PAID FOR BY THE TOTAL LENGTH OF THE PAINTED ROADWAY, NOT THE LENGTH OF ACTUAL PAINT.

## WARNING NOTE

THE LOCATIONS OF ALL EXISTING UTILITY INSTALLATIONS AS SHOWN ON THE PLAN ARE APPROXIMATE. THERE MAY BE OTHER UTILITY INSTALLATIONS AND RELOCATIONS WITHIN THE PROJECT AREA NOT SHOWN ON THE PLANS.

THE SUBSURFACE UTILITY INFORMATION IN THIS PLAN IS UTILITY QUALITY LEVEL D. THIS QUALITY LEVEL WAS DETERMINED ACCORDING TO THE GUIDELINES OF CI/ASCE 38-02, ENTITLED "STANDARD GUIDELINES FOR THE COLLECTION AND DEPICTION OF EXISTING SUBSURFACE UTILITY DATA."

CONTRACTOR SHALL CONTACT "GOPHER ONE" FOR LOCATION OF ALL UNDERGROUND WIRES, CABLES, CONDUITS, PIPES, VALVES, MANHOLES, OR OTHER BURIED STRUCTURE BEFORE DIGGING (1.800.252.1166).

CONTRACTOR SHALL REPAIR ANY OF THE ABOVE WHICH ARE REMOVED OR DAMAGED DURING CONSTRUCTION AT NO COST TO THE OWNER.

## GRADING NOTES

ONLY SUITABLE MATERIAL AS APPROVED BY THE GEOTECHNICAL ENGINEER SHALL BE USED FOR STRUCTURE FOUNDATION MATERIAL AND STREET CONSTRUCTION.

UNSUITABLE AND UNSTABLE MATERIAL SHALL BE REMOVED FROM STREET AREAS.

THE UPPER 3 FEET OF THE EMBANKMENT IN THE STREET AREAS SHALL BE COMPACTED TO 100 PERCENT OF THE STANDARD PROCTOR DENSITY.

## TURF RESTORATION

ALL EROSION AND SEDIMENT CONTROL MEASURES SHALL BE INSTALLED PRIOR TO DISTURBANCE COMMENCING.

ALL DISTURBED AREAS BEHIND THE CURB SHALL BE RESTORED WITH TURF RESTORATION (SY).

AS AREAS OUTSIDE THE STREETS ARE GRADED, PROVIDE 4 INCHES BOULEVARD TOP SOIL TURF RESTORATION.

TO MINIMIZE EROSION ON ALL OTHER AREAS, THE CONTRACTOR SHALL PROCEED WITH TURF RESTORATION ( SEED AND MULCH) WITHIN ONE WEEK OF COMPLETION OF ALL FINAL GRADES.

RATES OF APPLICATION

APPLY 20-0-10 (PHOSPHORUS FREE) FERTILIZER ON ALL TURF RESTORATION AREAS AT THE RATE OF 10 POUNDS PER 1000 SQUARE FEET.

STANDARD PLATES	
PLATE NO.	DESCRIPTION
7100 H	CONCRETE CURB AND GUTTER (DESIGN B)
8000 I	STANDARD BARRICADES

THE ABOVE STANDARD PLATES, APPROVED BY THE FEDERAL HIGHWAY ADMINISTRATION, SHALL APPLY ON THIS PROJECT.

## BASIS FOR ESTIMATED QUANTITIES

BITUMINOUS MATERIAL:  
NON-WEAR COURSE = 118 LB PER SY PER IN  
WEAR COURSE = 118 LB PER SY PER IN

TACK COAT:  
0.05 GAL PER SY - NEW PAVEMENT

FERTILIZER ANALYSIS 20-0-10 (PHOSPHORUS FREE):  
10 POUNDS PER 1000 SQUARE FEET

Save: 4/15/2020 2:31 PM \\bbr\raisch\Plot: 4/20/2020 6:50 PM X:\F\H\HAMBURG\1549615-final-dsgn\15-final-dsgn\15-final-dsgn\10-Civil\cad\dwg\sheet\HA1549615-SEC-NOTES-DETAIL.TS.dwg

DRAWN BY: BLB				
DESIGNER: BLB				
CHECKED BY: JLB				
DESIGN TEAM	NO.	BY	DATE	REVISIONS



I HEREBY CERTIFY THAT THIS PLAN WAS PREPARED BY ME OR UNDER MY DIRECT SUPERVISION AND THAT I AM A DULY LICENSED PROFESSIONAL ENGINEER UNDER THE LAWS OF THE STATE OF MINNESOTA.

*Justin Black*  
Date: 04/14/2020

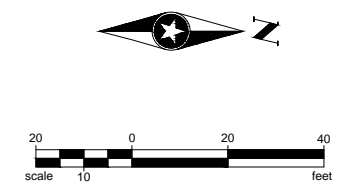
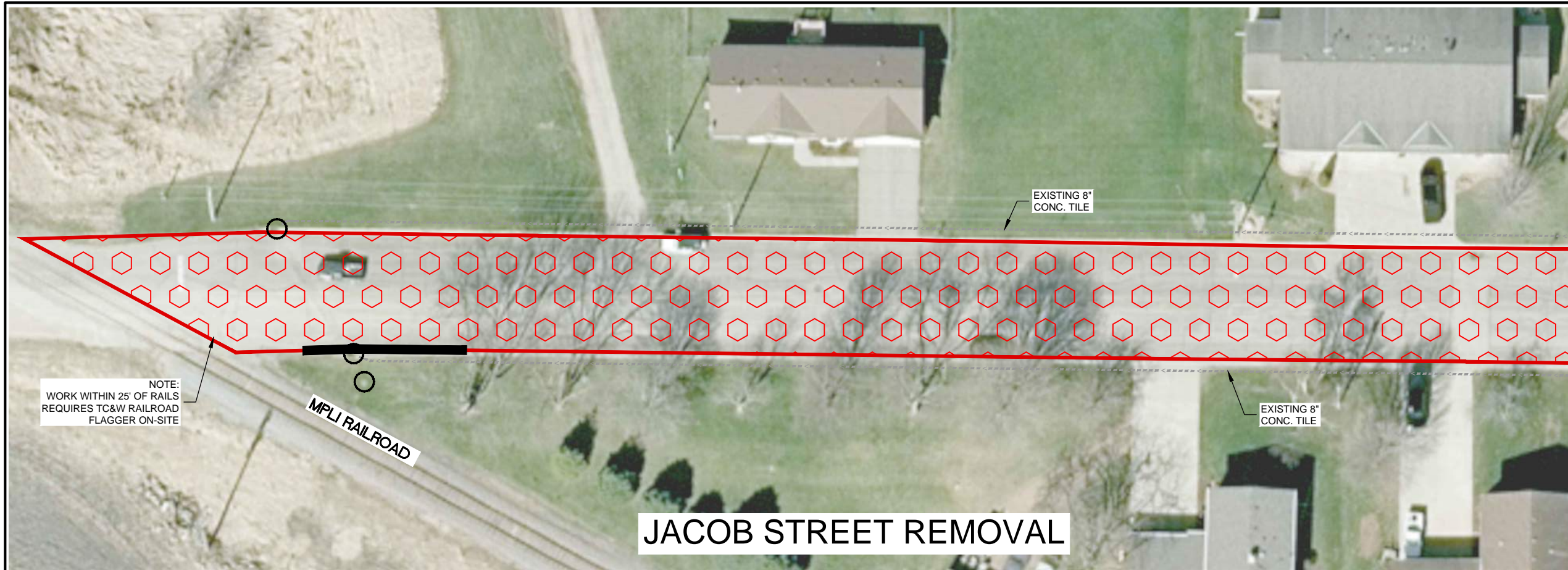
JUSTIN BLACK, PE  
Lic. No. 43373

2020 STREET  
IMPROVEMENT PROJECT  
HAMBURG, MINNESOTA





CONSTRUCTION NOTES

FILE NO.  
154961

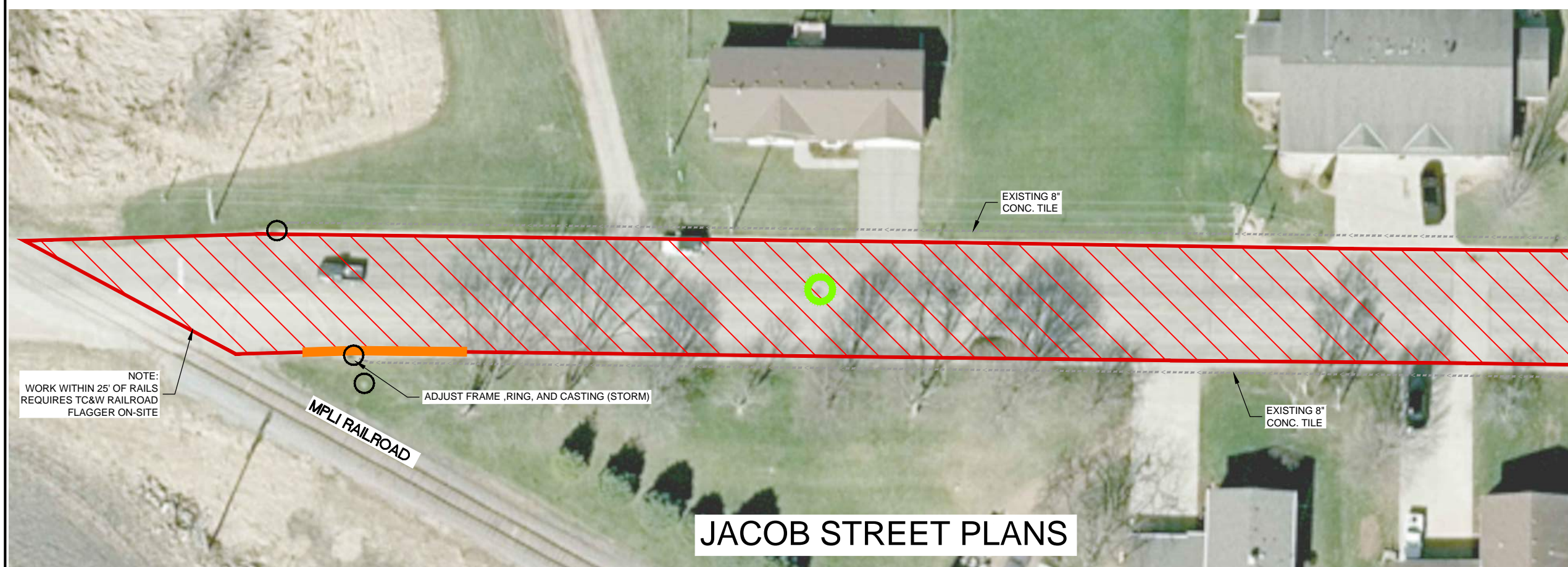
3  
5







**REMOVAL LEGEND:**

-  FULL DEPTH RECLAMATION (SEE SHEET 2)
-  INLET PROTECTION
-  ADJUST MANHOLE (SANITARY)
-  REMOVE CURB AND GUTTER

NOTE:  
SPOT REPLACEMENT OF CURB AND GUTTER  
WILL BE MARKED IN FIELD BY ENGINEER

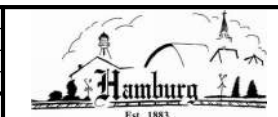


**LEGEND:**

-  CONSTRUCT NEW BITUMINOUS PAVEMENT SECTION (SEE SHEET 2)
-  INLET PROTECTION
-  ADJUST MANHOLE (SANITARY)
-  HAND FORMED CURB AND GUTTER

Save: 4/20/2020 6:42 PM bboraisch Plot: 4/21/2020 9:36 AM X:\FH\HAMBURG\154961\5-final-dsgn\51-drawings\10-Civil\cad\dwg\sheet\HA-154961 CONST\_PLANS.dwg

DRAWN BY:	BLB			
DESIGNER:	BLB			
CHECKED BY:	JLB			
DESIGN TEAM	NO.	BY	DATE	REVISIONS



I HEREBY CERTIFY THAT THIS PLAN WAS PREPARED BY ME OR UNDER MY DIRECT SUPERVISION AND THAT I AM A DULY LICENSED PROFESSIONAL ENGINEER UNDER THE LAWS OF THE STATE OF MINNESOTA.

*Justin Black*  
Date: 04/14/2020

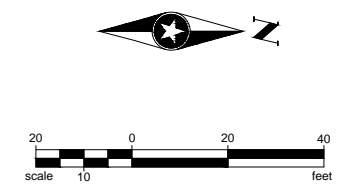
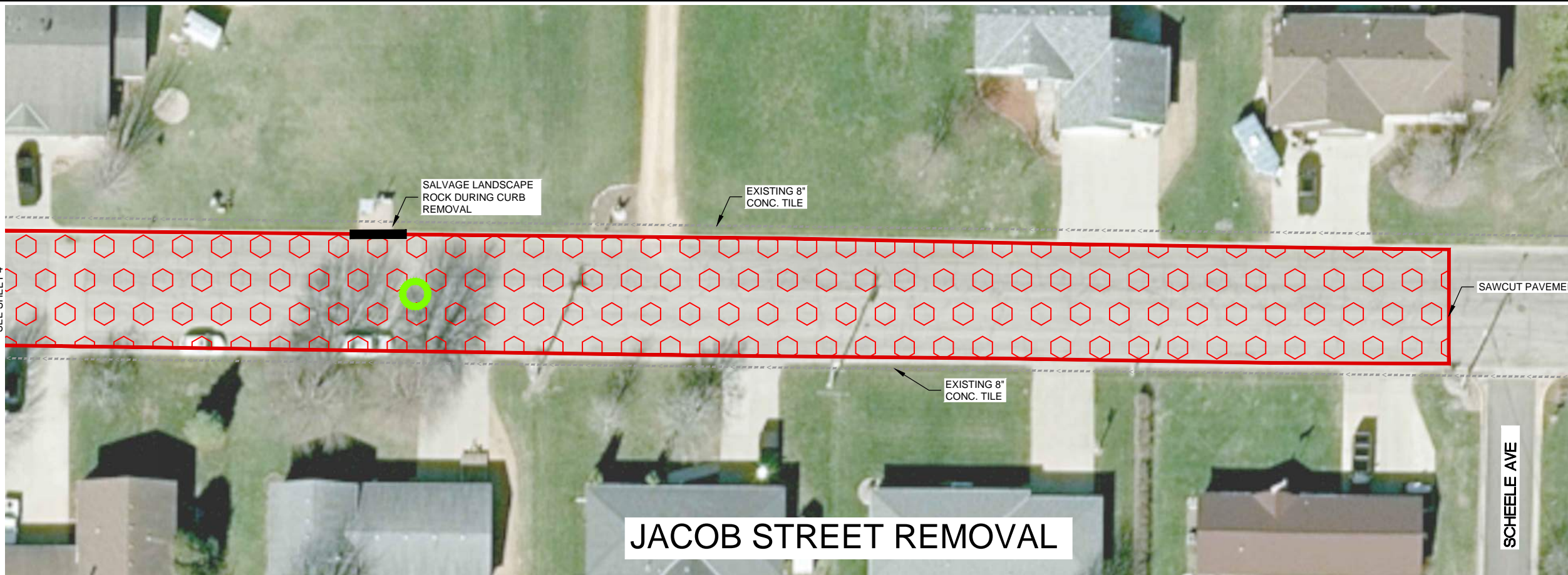
JUSTIN BLACK, PE  
Lic. No. 43373

2020 STREET  
IMPROVEMENT PROJECT  
HAMBURG, MINNESOTA

**PROPOSED IMPROVEMENTS**

FILE NO.  
154961

4  
5



**REMOVAL LEGEND:**

- FULL DEPTH RECLAMATION (SEE SHEET 2)
- INLET PROTECTION
- ADJUST MANHOLE (SANITARY)
- REMOVE CURB AND GUTTER

NOTE:  
SPOT REPLACEMENT OF CURB AND GUTTER  
WILL BE MARKED IN FIELD BY ENGINEER



**LEGEND:**

- CONSTRUCT NEW BITUMINOUS PAVEMENT SECTION (SEE SHEET 2)
- INLET PROTECTION
- ADJUST MANHOLE (SANITARY)
- HAND FORMED CURB AND GUTTER

Save: 4/15/2020 2:59 PM bboritsch Plot: 4/20/2020 6:41 PM X:\F\JHH\AMBU\1549615-final-dsgn\15-final-dsgn\10-Civil\cad\dwg\sheet\HA 15-4961 CONST\_PLANS.dwg

DRAWN BY:	BLB			
DESIGNER:	BLB			
CHECKED BY:	JLB			
DESIGN TEAM	NO.	BY	DATE	REVISIONS



**SEH**  
PHONE: 800.838.8666  
1390 HWY. 15 S.  
SUITE 200, PO BOX 308  
HUTCHINSON, MN 55350  
www.sehinc.com

I HEREBY CERTIFY THAT THIS PLAN WAS PREPARED BY ME OR UNDER MY DIRECT SUPERVISION AND THAT I AM A DULY LICENSED PROFESSIONAL ENGINEER UNDER THE LAWS OF THE STATE OF MINNESOTA.

*Justin Black*  
Date: 04/14/2020  
JUSTIN BLACK, PE  
Lic. No. 43373

2020 STREET  
IMPROVEMENT PROJECT  
HAMBURG, MINNESOTA

**PROPOSED IMPROVEMENTS**

FILE NO.  
154961

5  
5